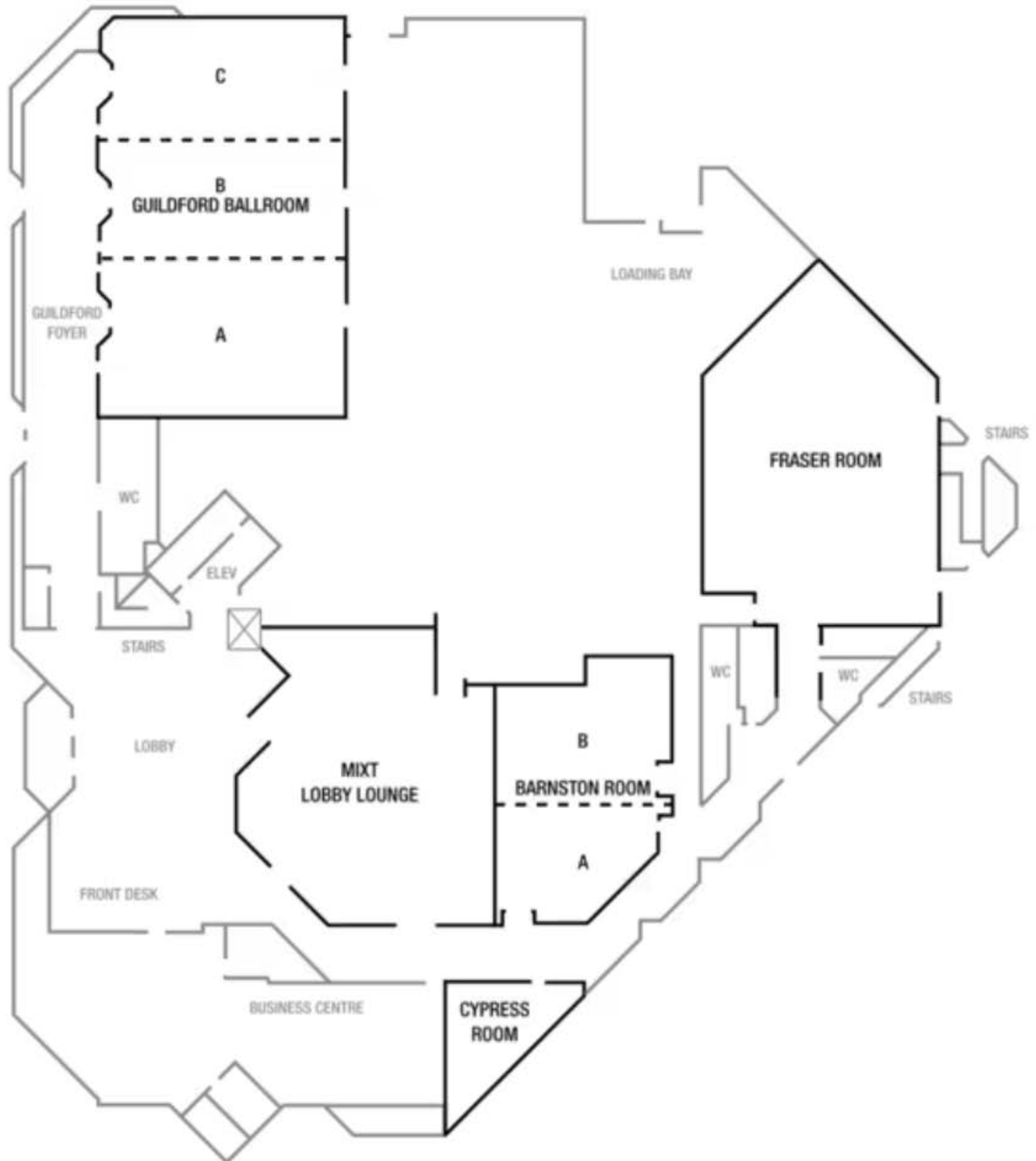
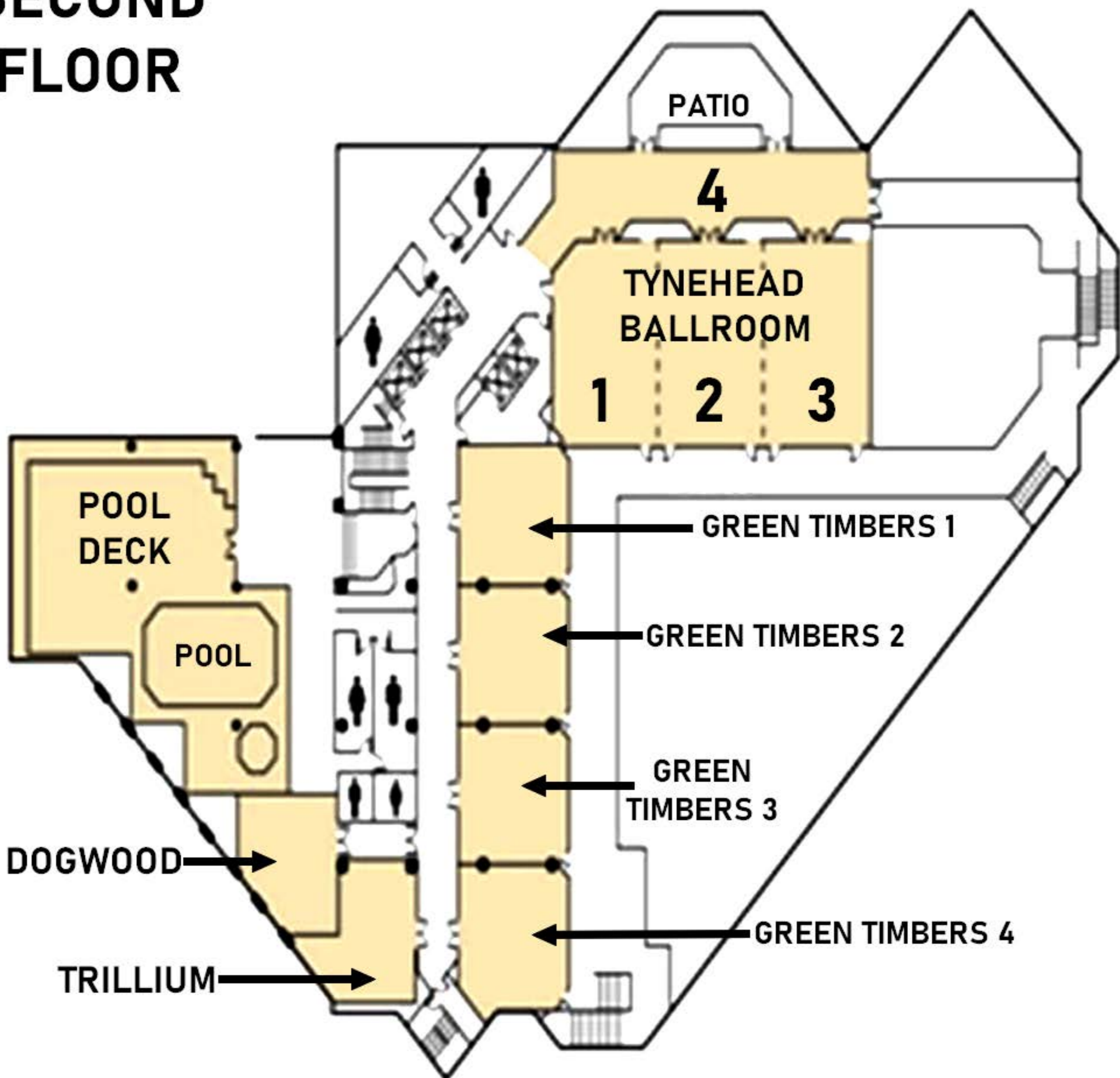


# MAIN FLOOR MEETING ROOMS



# SECOND FLOOR



# GREEN TIMBERS -1 to 4

## Fire Exits

1 exit goes out of the building, turn right and down the stairs to 153<sup>rd</sup> street. Exiting through the entrance door, turn left then go down the stairs to 153<sup>rd</sup> street or turn right and go down the stairs to the lobby.

**PLEASE NOTE THAT OUR ELEVATORS DO NOT WORK DURING A FIRE ALARM SITUATION**

## AED

Located inside the Fitness Centre and at the front desk.

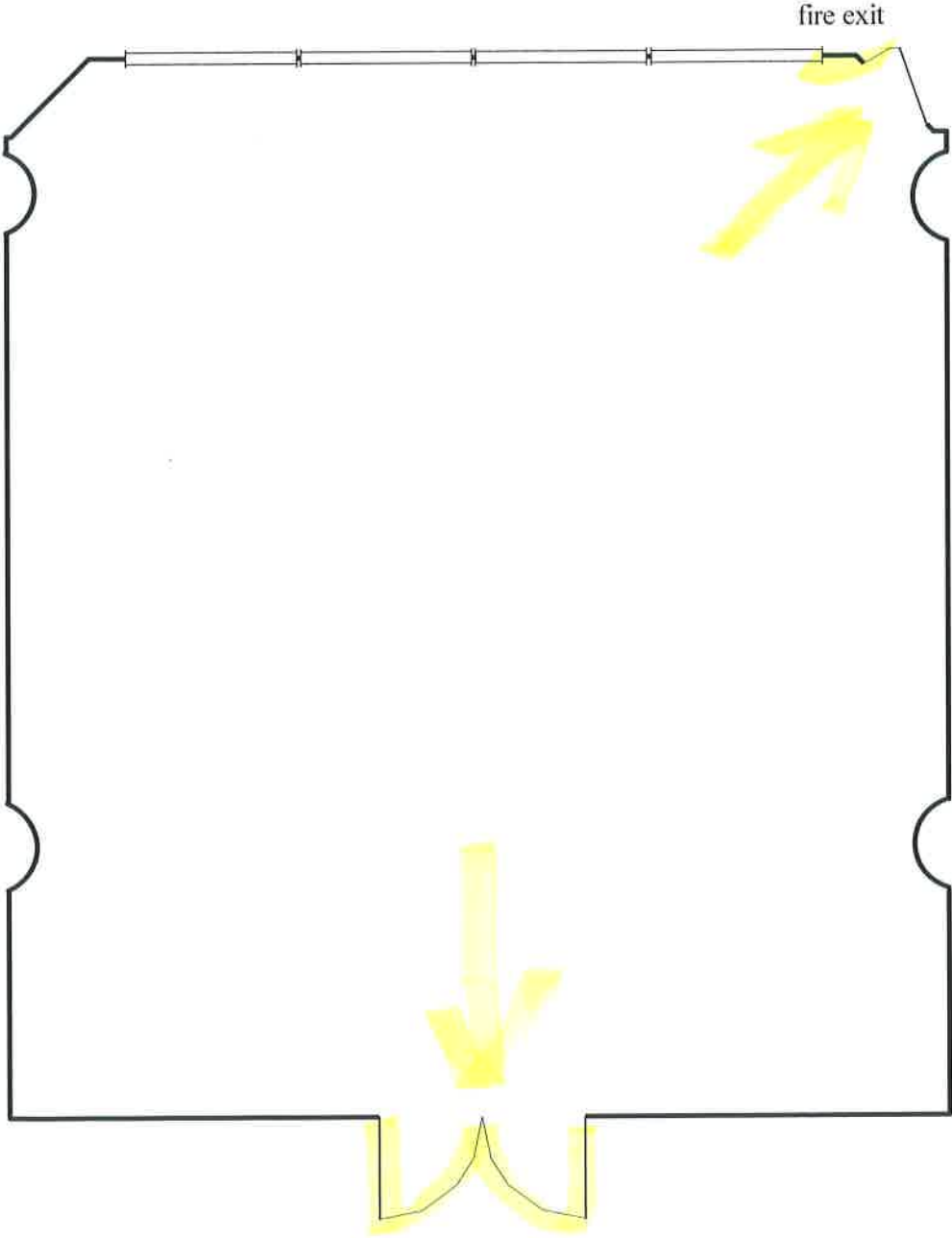
## FIRE ALARM

When a fire alarm is activated an intermittently alarm at 20 spm (signal per minute) will sound throughout the building and if the trouble is not located and alarm silenced manually the system will automatically go on full alarm mode after 5minutes. Please do not panic and follow the instructions announced over the PA system.

We will keep you updated throughout until the situation is under control.



# Green Timbers 3



# SHERATON VANCOUVER GUILDFORD HOTEL






2nd Floor

15269 - 104th Avenue

Surrey, B.C.



**LEGEND:**

-  FIRE EXIT
-  PULL STATION
-  FIRE EXTINGUISHER
-  FIRE FIGHTER TELEPHONE
-  ELEVATOR



# BARNSTON "A"

## Fire Exits

2 exits to the hallway turn left in the hallway and out through the glass exit doors to 153<sup>rd</sup> street or turn right and go through the lobby entrance doors.

## AED

Located at the front desk.

## FIRE ALARM

When a fire alarm is activated an intermittently alarm at 20 spm (signal per minute) will sound throughout the building and if the trouble is not located and alarm silenced manually the system will automatically go on full alarm mode after 5minutes. Please do not panic and follow the instructions announced over the PA system.

We will keep you updated throughout until the situation is under control.

# **BARNSTON "B"**

## **Fire Exits**

1 exit to the hallway and through the glass exit doors to 153<sup>rd</sup> street or turn right in the hallway and out through the lobby entrance doors. If needed use the back service door through the kitchen.

## **AED**

Located at the front desk.

## **FIRE ALARM**

When a fire alarm is activated an intermittently alarm at 20 spm (signal per minute) will sound throughout the building and if the trouble is not located and alarm silenced manually the system will automatically go on full alarm mode after 5minutes. Please do not panic and follow the instructions announced over the PA system.

We will keep you updated throughout until the situation is under control.

# CYPRESS ROOM

## Fire Exits

1 exit to the hallway turn right in the hallway and out through the glass exit doors to 153<sup>rd</sup> street or turn left and out through the lobby entrance doors.

## AED

Located at the front desk.

## FIRE ALARM

When a fire alarm is activated an intermittently alarm at 20 spm (signal per minute) will sound throughout the building and if the trouble is not located and alarm silenced manually the system will automatically go on full alarm mode after 5minutes. Please do not panic and follow the instructions announced over the PA system.

We will keep you updated throughout until the situation is under control.



# **DOGWOOD ROOM**

## **Fire Exits**

Exit through the entrance door turn right and through the exit door and down the stairs to 153<sup>rd</sup> street or turn right and go down the stairs to the lobby.

**PLEASE NOTE THAT OUR ELEVATORS DO NOT WORK DURING A FIRE ALARM SITUATION**

## **AED**

Located inside the Fitness Centre and at the front desk.

## **FIRE ALARM**

When a fire alarm is activated an intermittently alarm at 20 spm (signal per minute) will sound throughout the building and if the trouble is not located and alarm silenced manually the system will automatically go on full alarm mode after 5minutes. Please do not panic and follow the instructions announced over the PA system.

We will keep you updated throughout until the situation is under control.

# FRASER ROOM

## Fire Exits

2 exits on the north east side exiting out of the building or main entrance to the hallway turn left and out through the glass exit doors to 153<sup>rd</sup> street or go straight through the lobby entrance doors and if needed use service door through the kitchen.

## AED

Located at the front desk.

## FIRE ALARM

When a fire alarm is activated an intermittently alarm at 20 spm (signal per minute) will sound throughout the building and if the trouble is not located and alarm silenced manually the system will automatically go on full alarm mode after 5minutes. Please do not panic and follow the instructions announced over the PA system.

We will keep you updated throughout until the situation is under control.

# GREEN TIMBERS -1 to 4

## Fire Exits

1 exit goes out of the building, turn right and down the stairs to 153<sup>rd</sup> street. Exiting through the entrance door, turn left then go down the stairs to 153<sup>rd</sup> street or turn right and go down the stairs to the lobby.

**PLEASE NOTE THAT OUR ELEVATORS DO NOT WORK DURING A FIRE ALARM SITUATION**

## AED

Located inside the Fitness Centre and at the front desk.

## FIRE ALARM

When a fire alarm is activated an intermittently alarm at 20 spm (signal per minute) will sound throughout the building and if the trouble is not located and alarm silenced manually the system will automatically go on full alarm mode after 5minutes. Please do not panic and follow the instructions announced over the PA system.

We will keep you updated throughout until the situation is under control.

# GUILDFORD "A"

## Fire Exits

To the front are 2 exits and the main entrance door exiting to the foyer and 1 exit at the back into the back hallway turn left and out through the building exit doors.

## AED

Located at the front desk.

## FIRE ALARM

When a fire alarm is activated an intermittently alarm at 20 spm (signal per minute) will sound throughout the building and if the trouble is not located and alarm silenced manually the system will automatically go on full alarm mode after 5minutes. Please do not panic and follow the instructions announced over the PA system.

We will keep you updated throughout until the situation is under control.

# **GUILDFORD" B"**

## **Fire Exits**

To the front are 1 exit and the main entrance door exiting to the foyer and 1 exit at the back into the back hallway turn left and out through the building exit doors.

## **AED**

Located at the front desk.

## **FIRE ALARM**

When a fire alarm is activated an intermittently alarm at 20 spm (signal per minute) will sound throughout the building and if the trouble is not located and alarm silenced manually the system will automatically go on full alarm mode after 5minutes. Please do not panic and follow the instructions announced over the PA system.

We will keep you updated throughout until the situation is under control.

# GUILDFORD" C"

## Fire Exits

To the front are 1 exit and the main entrance door exiting to the foyer and 1 exit at the back into the back hallway turn left and out through the building exit doors.

## AED

Located at the front desk.

## FIRE ALARM

When a fire alarm is activated an intermittently alarm at 20 spm (signal per minute) will sound throughout the building and if the trouble is not located and alarm silenced manually the system will automatically go on full alarm mode after 5minutes. Please do not panic and follow the instructions announced over the PA system.

We will keep you updated throughout until the situation is under control.

# TRILLIUM ROOM

## Fire Exits

Exit through the entrance door turn right and through the exit door and down the stairs to 153<sup>rd</sup> street or turn right and go down the stairs to the lobby.

**PLEASE NOTE THAT OUR ELEVATORS DO NOT WORK DURING A FIRE ALARM SITUATION**

## AED

Located inside the Fitness Centre and at the front desk.

## FIRE ALARM

When a fire alarm is activated an intermittently alarm at 20 spm (signal per minute) will sound throughout the building and if the trouble is not located and alarm silenced manually the system will automatically go on full alarm mode after 5minutes. Please do not panic and follow the instructions announced over the PA system.

We will keep you updated throughout until the situation is under control.

# TYNEHEAD -1

## Fire Exits

1 exit goes out of the building, turn right follow the pathway and down the stairs to 153<sup>rd</sup> street. Exiting through the front entrance or front left exit doors, turn right follow the pathway and go down the stairs to 153<sup>rd</sup> street or turn right and go down the stairs to the lobby.

**PLEASE NOTE THAT OUR ELEVATORS DO NOT WORK DURING A FIRE ALARM SITUATION**

## AED

Located inside the Fitness Centre and at the front desk.

## FIRE ALARM

When a fire alarm is activated an intermittently alarm at 20 spm (signal per minute) will sound throughout the building and if the trouble is not located and alarm silenced manually the system will automatically go on full alarm mode after 5minutes. Please do not panic and follow the instructions announced over the PA system.

We will keep you updated throughout until the situation is under control.



# TYNEHEAD -2

## Fire Exits

1 exit goes out of the building, turn right follow the pathway and down the stairs to 153<sup>rd</sup> street. Exiting through the front entrance, turn right follow the pathway and go down the stairs to 153<sup>rd</sup> street or turn right and go down the stairs to the lobby.

**PLEASE NOTE THAT OUR ELEVATORS DO NOT WORK DURING A FIRE ALARM SITUATION**

## AED

Located inside the Fitness Centre and at the front desk.

## FIRE ALARM

When a fire alarm is activated an intermittently alarm at 20 spm (signal per minute) will sound throughout the building and if the trouble is not located and alarm silenced manually the system will automatically go on full alarm mode after 5minutes. Please do not panic and follow the instructions announced over the PA system.

We will keep you updated throughout until the situation is under control.

# TYNEHEAD -3

## Fire Exits

1 exit goes out of the building, turn right follow the pathway and down the stairs to 153<sup>rd</sup> street. Exiting through the front entrance, turn right follow the pathway and go down the stairs to 153<sup>rd</sup> street or turn right and go down the stairs to the lobby.

**PLEASE NOTE THAT OUR ELEVATORS DO NOT WORK DURING A FIRE ALARM SITUATION**

## AED

Located inside the Fitness Centre and at the front desk.

## FIRE ALARM

When a fire alarm is activated an intermittently alarm at 20 spm (signal per minute) will sound throughout the building and if the trouble is not located and alarm silenced manually the system will automatically go on full alarm mode after 5minutes. Please do not panic and follow the instructions announced over the PA system.

We will keep you updated throughout until the situation is under control.

## Safety Briefing

The room/rooms allocated for this group is/are on the \_\_\_\_ and \_\_\_\_ floor/floors. You will be using \_\_\_\_ room/rooms on lobby level and \_\_\_\_ room/rooms on the second floor.

The lobby level Fraser room's entrance door and Guildford room's exit door have magnetic door locks and in case of a fire alarm these door locks are automatically demagnetized and the doors are easily accessible.

**Please note AED's are located at the front desk in the lobby and inside the Sheraton Fitness Centre on the second floor.**

In case of a fire alarm situation you will hear an intermittent alarm at 20 spm (signal per minute) which will sound throughout the building and will automatically go on a full alarm mode after 5 minutes.

Please do not panic and follow the instructions announced via the PA system. We will keep you updated via the PA system until the situation is under control.

**Also note that our elevators are not functional during a fire alarm situation, use the staircase.**

**Please go through the detailed fire safety evacuation plan posted in each of your meeting rooms and call one of us if you have any queries.**

# **BARNSTON "A"**

## **Fire Exits**

2 exits to the hallway turn left in the hallway and out through the glass exit doors to 153<sup>rd</sup> street or turn right and go through the lobby entrance doors.

## **AED**

Located at the front desk.

## **FIRE ALARM**

When a fire alarm is activated an intermittently alarm at 20 spm (signal per minute) will sound throughout the building and if the trouble is not located and alarm silenced manually the system will automatically go on full alarm mode after 5minutes. Please do not panic and follow the instructions announced over the PA system.

We will keep you updated throughout until the situation is under control.